

**"And whoever, at the time of death,
quits his body, remembering Me alone,
at once attains My nature.
Of this there is no doubt."**

- Bhagwadgita Chapter 8 Verse 5



**VRINDAVAN INSTITUTE of PALLIATIVE CARE
& BHAKTI VEDANTA Hospice**

VRINDAVAN

AN OFFERING TO HIS DIVINE GRACE A. C. BHAKTIVEDANTA SWAMI PRABHUPADA
Founder Acharya of International Society for Krishna Consciousness (ISKCON)

~ A back to Godhead Clinic ~

LOCATION

3 minutes from KRSNA BALRAM TEMPLE

AREA

30000 sq. Ft.

PERSONALITIES INVOLVED - FUND RAISING

H. H. Giriraj Swami
H. G. Krsnacandra Prabhu

EXECUTING AUTHORITIES

H. H. Radhanath Swami
Bhaktivedanta Hospital Team

TRAINING

H. G. Sangita Devi Dasi
(Disciple of Srila Prabhupada)
Certified Hospice and Palliative Nurse

What is a Hospice?

The word Hospice is derived from Latin word "Hospitium" meaning a guest house. It is a place where end-of-life care is given to patients diagnosed with terminal illness which enables them to die with dignity. It includes physical, social, psychological and spiritual care to patients and their families.

Our Mission

"To Provide holistic end-of-life care for the departing Vaishnavas and thus express our gratitude for those devotees who have pledged and devoted their life to spreading the Mission of Srila Prabhupada."

Inspiration to start the Hospice

Mother Arca-Vigraha was the first devotee to leave her body in Vrindavan and receive so much attention. Her spiritual qualities attracted many devotees to spend time with her, and her departure became paradigmatic of how to pass away in Kṛṣṇa consciousness with the support of the Vaisnavas. And she wanted other devotees to have the chance to leave their bodies in the same way, in the spiritual atmosphere of Vrindavana. At the same time, she became acutely aware of the deficiencies in the medical care there. So she wanted us to have what she called a **"Back-to-Godhead Clinic."**

Facilities and Services offered

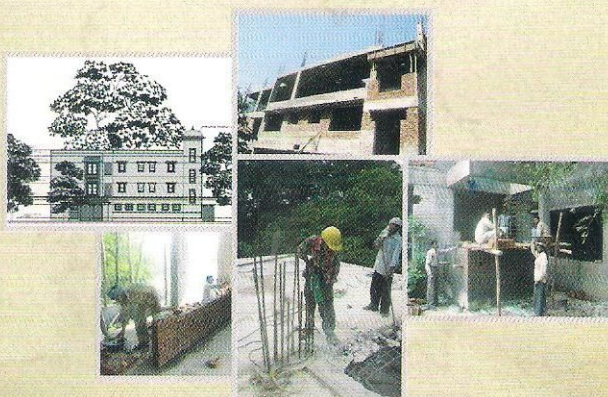
Facilities

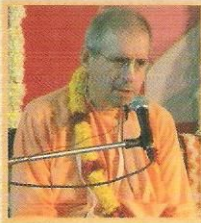
- ▶ Homely Interior & Spacious Garden with Vrindavan Theme
- ▶ Altar & pantry in every room
- ▶ Darshan of Krishna Balram Temple Deities on CCTV and Piped Music
- ▶ 16 well equipped patient rooms with central air conditioning and heating
- ▶ DG set with residential silencer
- ▶ Two well Furnished Guest Rooms

Services

- ▶ Hydrotherapy and massage facilities
- ▶ Kitchen and dining hall
- ▶ Laundry and Housekeeping
- ▶ Staff quarters with separate entrance
- ▶ OPD clinic with separate waiting area for new hospice patients
- ▶ Ambulance facility
- ▶ Care for the Care Giver

Bhaktivedanta Hospice is scheduled to be functional by end of 2008.





H.H. Giriraj Swami

"Special feature of Bhaktivedanta Hospice is that it will help the patient to think of Krishna at the time of death so that they are liberated from cycle of repeated birth and death and attain their eternal, blissful, spiritual life with Krishna in spiritual abode.

By serving Krishna and even more so by serving Krishna's devotees you get greatest benefit, greater than any benefit you can imagine both material and spiritual."



H.H. Radhanath Swami
Maharaj

"There is a great need in our society to offer devotees the most loving and caring Krishna Conscious atmosphere in their greatest hour of need, the time of departure from this world. These great souls have dedicated the best years of their lives in the service of Krishna, Srila Prabhupada and the vaisnavas. For this sacred purpose the Bhaktivedanta Hospice will soon be opened in Vrindaban.

We are hoping that this intimate project may unite devotees from all over the world and nourish a genuine mood of service to the devotees. I pray that sincere souls may take concern and contribute to this precious service to the vaisnavas. We at Bhaktivedanta Hospital in Mumbai are very grateful for being given responsibility for the medical services in the hospice and pray for your blessings."

Vrindavan Institute Of Palliative Care (VIPC)

VIPC is aimed at providing free hospice and palliative care to terminally ill & dying patients - the Brijwasis & Vaishnavas.

1. In Patient facility with eight beds to provide end-of-life care
2. As far as possible, home care will be provided to the patients who are bed-bound or at our in-patient facility.
3. All treatment will be provided to the patients **free of charge including medicines** and basic investigations.

Patients with terminal illnesses like Cancers in Multiple Sclerosis, End stage heart, Lung, Liver and Renal Diseases are taken care with compassion at VIPC.

Vrindavan Institute of Palliative Care is already functional and has recruited Medical & Para-Medical Staff who are serving the patients.



Vrindavan Institute of Palliative Care & Bhaktivedanta Hospice

To understand your need and serve you better, could you take a few moments to answer these questions. (Please write in Capitals)

1. Name: Mr./Ms.
2. Contact details: Address
..... Tel. No.:
Email:
3. Nearest ISKCON Temple / Center:
4. Name of Temple President / Yatra Leader & Contact No.:
..... Email:
5. Are you aware of someone who is terminally ill and may need Hospice/Palliative care?
Yes / No
6. Nature of illness:- Cancer/End stage Liver Disease/Lung Disease/Heart Disease/ Renal Disease/Others (Please specify):
.....
.....
7. What is your relationship to the person you care for?
a) Spouse
b) Child
c) Other Relationship (Pls specify)
8. Would you recommend them to Bhaktivedanta Hospice, Vrindavan and by when?
9. Do you belong to any community, volunteer groups or organizations?
Yes/No
If yes, please specify :
10. Would you volunteer to:
Serve at Hospice for 2-4 weeks or more in a year? Yes/No
11. Any other suggestions / comments:

As a supporter and donor your goodwill would be recognised in several ways. So remember, no matter the shape or amount... the essence of your kindness will remain eternal.

- ▶ Naming opportunities are available for specific Hospice Departments, Patient Rooms etc.
- ▶ You can sponsor a patient either directly or in memory of someone you love.
- ▶ You too can sponsor the per patients' daily needs of Medicines, Food, Investigations and alike starting from US\$ 75 or Rs. 3000.

The Hospice will be maintained on Sliding Scale Fee structure and Donor Support.



I would like to extend
my support
by contributing to,

- ☐ Corpus Fund ☐ Support a Brajwasi Patient at VIPC
- ☐ Support a Hospice Patient ☐ Raising Funds for Hospice & VIPC

Method of Payment : ☐ Cheque ☐ Cash

Cheque Details:

Bank Name

Branch Amount

Cheque Number

Name of Donor

Office Address

Residential Address

Telephone Number Cell Number

Email:

PLEASE draw your cheque favouring
"Sri Chaitanya Seva Trust - Hospice A/c"
and avail 80G Tax benefit